

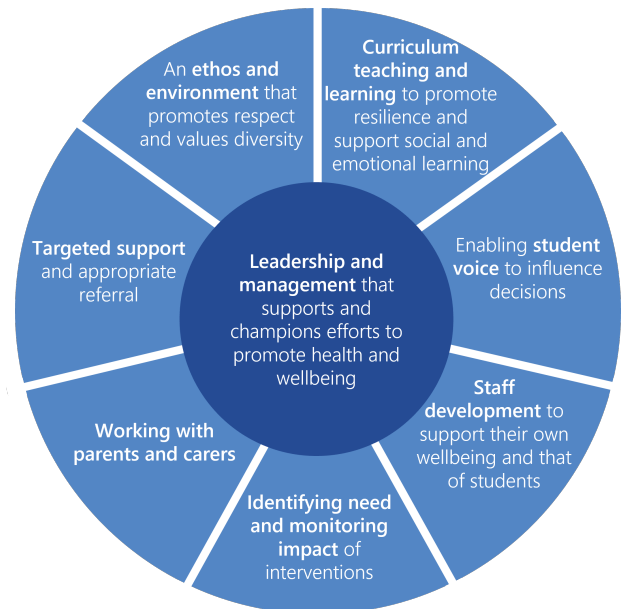
A practical introduction to implementing a whole school approach

Research indicates that taking a coordinated and evidence-informed **whole school approach to mental health and wellbeing** leads to improved emotional health and wellbeing in children and young people, and greater readiness to learn.

Schools and colleges that have taken this approach often report improved attendance, attention, behaviour and attainment; and consider it an essential part of their response to the needs of their children and young people, the Covid-19 pandemic and the current cost of living emergency.

The **Department for Education** are offering schools and colleges a **grant of £1,200** for a member of school staff to access quality assured training to implement an effective whole school approach to mental health and wellbeing in your setting.

The grant is provided to cover the cost of attending training and may also be used to hire supply staff whilst the nominated staff member is engaged in learning. Grants remain available on a **first-come, first-served** basis until DfE have allocated all available funds for the 2022-23 financial year.



Step 1 / Apply for your grant

Visit the [grant application service](#) to submit your application today.



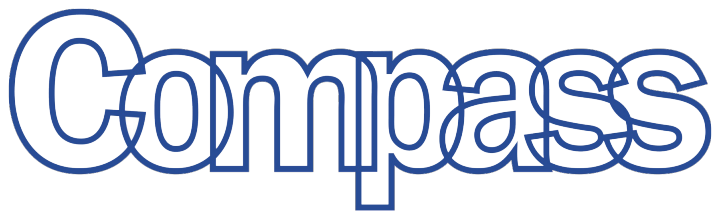
Our DfE quality-assured and CPD Certified training - **A practical introduction to implementing a whole school approach** - continues our focus on early intervention by delivering practical, evidence-based support to new and existing mental health leads in settings wherever you are in your journey.

Our 2 x 6-hour training sessions are delivered **online or face-to-face** in small groups to facilitate shared learning and develop peer networks. Content focuses on each of the principles of the whole school approach with protected time to audit and action plan your setting. You then access to a follow-up 1-2-1 consultation session, termly Community of Practice sessions, and our facilitated digital platform.

Step 2 / Book onto our training

Visit our [online registration form](#) and choose dates that work for you.





Department for Education
funded and quality-assured
Senior Mental Health Lead
training programme

Our credentials

Compass is an established national charity that specialises in children and young people's mental health and well-being, both through the delivery of training programmes (such as this one) but also through the delivery of well-respected health promotion and early intervention services including several Mental Health Support Teams across the UK. In recent years, our whole school approach training has been delivered by our experienced and dedicated workforce to over 400 schools in North Yorkshire, and over 90 schools nationally - all of this knowledge goes into our updated materials for this academic year.

For more information about Compass or to discuss our training please visit our [website](#), or contact **Danielle Grant** by telephone on **07918 320 259** or by email at positiveeffect@compass-uk.org.

Schools were very satisfied with the course and the support, strategies, tools, resources, and networks it provided. With testimonials like these it's not hard to see why:

"It was absolutely brilliant for my role and the format is fantastic, it's given me exactly what I need in terms of actions." (Canon Peter Hall CoFE School)

"What you brought out in the course helped me rethink my role in school. It's intense, no doubt about it, but the way you did it was very thought provoking and empowering. It turns out we are already doing quite a bit, but there are things we could be doing better." (Pannal Primary School)



Leicestershire Healthy Schools Programme - Support for 2022-23

Compass have teamed up with [Leicestershire County Council's Healthy Schools Programme](#) to offer course content adapted for a local context and Leicestershire exclusive groups (providing the opportunity to build or strengthen a local support network).

On completion of our course, participating schools will be supported by the local authority's **Children and Young People's (CYP) Officers** to embed their new 'whole school approach' action plan. On completion, schools will have the opportunity to receive **Healthy Schools Plus Status** on the topic.

Alongside our course, schools will be able to access new **Well-being for Education Leicestershire** sessions developed by our local expert. These sessions will extend your knowledge on key mental health and well-being topics, and showcase local children and young people's mental health and well-being providers.

On completion of our training (or by request for those that have not) you will be able to access ongoing **Emotional Health and Well-being Supervision** to improve your knowledge, skills, and confidence in supporting children and young with existing or undiagnosed mental health challenges.



Each of these opportunities are funded by Leicestershire County Council and therefore **free to access** for our schools.

Compass is a national charity providing health and wellbeing services for children, young people, adults, families and communities.

<https://www.compass-uk.org/>

Company number 02054594 | Charity number 518048

